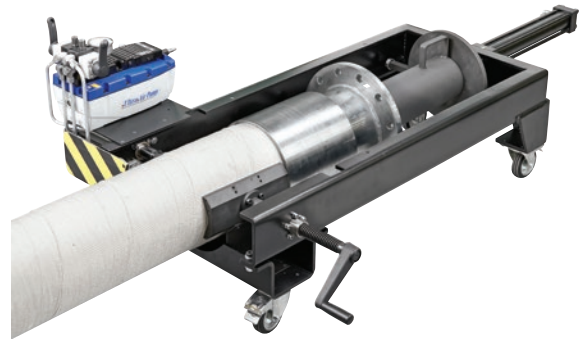


Hose Capacity (in)	Push Force (lbs)
8	8,818
Max Coupling OD (in)	16.7
Pusher Size	
L x W x H (in)	44.3 x 69.7 x 24.6
Weight (lbs)	298
Part Number	Pump Info
KPUSH8	100 PSI

KPUSH8

Industrial Hose Pusher

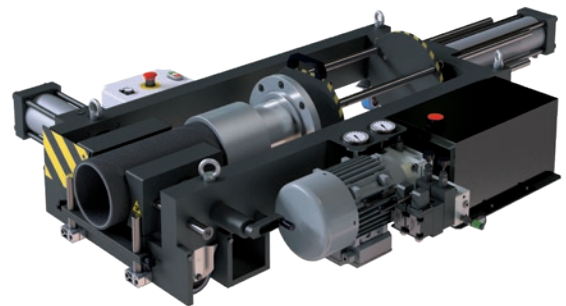


Description: An extremely powerful unit that is up to almost any task. Powered by a separate air pump, its clamping mechanism holds any size hose firmly in place during insertion.

Hose Capacity (in)	Push Force (lbs)
8	22,046
Max Coupling OD (in)	16.7
Pusher Size	
L x W x H (in)	49.2 x 71.9 x 13.8
Weight (lbs)	992
Part Number	Motor Info
KPUSH22	3 HP

KPUSH22

Concrete Hose Pusher



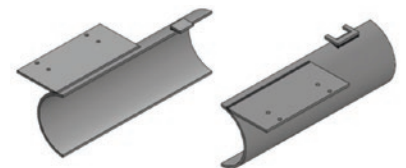
Description: Boasting 22,046 lbs of crimping force, the KPUSH22 is designed for difficult, heavy duty industrial hose such as concrete and petroleum hoses. Its clamping mechanism holds any size hose firmly in place during insertion.

Part Number	Description	Hose ID (in)
PUSHJAWS22	Non-slip Hose Jaws	2 - 5
PUSHMAN200	Concrete Hose Mandrel	2
PUSHMAN250	Concrete Hose Mandrel	2 1/2
PUSHMAN300	Concrete Hose Mandrel	3
PUSHMAN350	Concrete Hose Mandrel	3 1/2
PUSHMAN400	Concrete Hose Mandrel	4
PUSHMAN500	Concrete Hose Mandrel	5

Optional Accessories:



Concrete Hose Mandrels



Non-Slip Hose Jaws

Because we continually examine ways to improve our products, we reserve the right to alter specifications or discontinue products without prior notice.