

KC4-V250 Series



Greaseless
Operation



Silent
Pump

| Hose Capacity (in) | | Crimping Force (ton) |
|--------------------|----|----------------------|
| 1 – 2 Wire | 3 | 551 |
| 4 SP / 6 SP | 3 | |
| 90° Fittings | 3 | |
| Industrial | 10 | |

| Opening Diameter | |
|-----------------------------|-----------------------|
| Max. Without Dies (mm / in) | 380 / 14.96 |
| Max. With Dies (mm / in) | 350 / 13.78 |
| By Die Size (mm) | Die Size + 150 |

| Crimper Size | |
|----------------|--------------------|
| L x W x H (in) | 53.1 x 26.1 x 74.2 |
| Weight (lbs) | 6,717 |

| Part Number | Motor Info |
|-----------------------|--------------------|
| KC4-V250-230/3 | 15 HP (230 V) 3 PH |

| Die Series | Die Range (mm) |
|-------------|----------------|
| V119 & V230 | 6 – 200* |

* Large Diameter Dies available up to 281 mm

Control Mechanism:

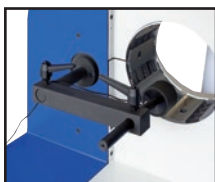


ES4

- Large, full-color, touch-screen display
- Stores up to 1,000 crimp specifications
- Built-in crimp diameter calculator
- USB port connection for data transfer
- Optional upgrades such as digital caliper, history data save, barcode reader, webcam and WiFi connection

Description: Handles industrial hose up to 10" and features an enlarged opening mechanism that allows for assemblies with large couplings or flanges. Its back limit switch option and advanced Siemens's ES4 computerized controller greatly reduce cycle times. Its power pack is separated from the main unit creating a thin profile. Reduction dies included.

Included Accessories:



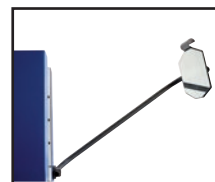
Back Limit Switch



Electric Foot Pedal
PEDAL-ES



Fitting Orientation
Protractor



Back Mirror

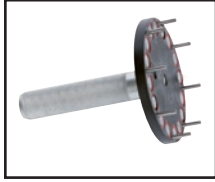


Crimp Calculator

Because we continually examine ways to improve our products, we reserve the right to alter specifications or discontinue products without prior notice.

KC4-V250 Series

Optional Accessories: (pgs. 34 – 41)



Quick Change
Die Tool
KCQCT-H119



Patented Quick
Change Die Tool
KCPQCT-V250



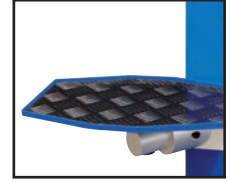
Die Cart (24 pc.)
DIECART-V119



ES4 Upgrades
(pgs. 36 & 37)



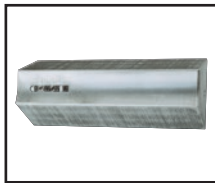
Protection Net with
Activation Switch



Mounted Side Table
TABLE-KC



Custom Made Dies
(pg. 41)



Marking Dies
(pg.41)

Available Dies:

| Die Number | Crimp Range (mm) | Closed Diameter (mm) | Length (mm) | Weight (lbs/ea) |
|------------|------------------|----------------------|-------------|-----------------|
| KCDV119-6 | 6.0 - 8.0 | 6 | 60 | 15.4 |
| KCDV119-8 | 8.0 - 10.0 | 8 | 60 | 15.4 |
| KCDV119-10 | 10.0 - 12.0 | 10 | 60 | 14.4 |
| KCDV119-12 | 12.0 - 14.0 | 12 | 60 | 14.4 |
| KCDV119-14 | 14.0 - 16.0 | 14 | 60 | 15.5 |
| KCDV119-16 | 16.0 - 19.0 | 16 | 60 | 15.5 |
| KCDV119-19 | 19.0 - 22.0 | 19 | 60 | 16.6 |
| KCDV119-22 | 22.0 - 25.0 | 22 | 60 | 16.6 |
| KCDV119-25 | 25.0 - 29.0 | 25 | 60 | 15.5 |
| KCDV119-29 | 29.0 - 34.0 | 29 | 70 | 15.5 |
| KCDV119-34 | 34.0 - 38.0 | 34 | 70 | 15.5 |
| KCDV119-38 | 38.0 - 42.0 | 38 | 85 | 15.5 |
| KCDV119-42 | 42.0 - 46.0 | 42 | 85 | 15.5 |
| KCDV119-46 | 46.0 - 50.0 | 46 | 120 | 19.9 |
| KCDV119-50 | 50.0 - 54.0 | 50 | 120 | 15.5 |
| KCDV119-54 | 54.0 - 58.0 | 54 | 120 | 16.6 |
| KCDV119-58 | 58.0 - 63.0 | 58 | 120 | 16.6 |
| KCDV119-63 | 63.0 - 69.0 | 63 | 120 | 17.7 |
| KCDV119-69 | 69.0 - 73.0 | 69 | 120 | 15.5 |

| Die Number | Crimp Range (mm) | Closed Diameter (mm) | Length (mm) | Weight (lbs/ea) |
|-------------|------------------|----------------------|-------------|-----------------|
| KCDV119-73 | 73.0 - 77.0 | 73 | 120 | 13.3 |
| KCDV119-77 | 77.0 - 86.0 | 77 | 120 | 11.1 |
| KCDV119-86 | 86.0 - 90.0 | 86 | 120 | 12.5 |
| KCDV119-96 | 96.0 - 103.0 | 96 | 120 | 8.9 |
| KCDV230-103 | 103.0 - 106.0 | 103 | 145 | 79.3 |
| KCDV230-106 | 106.0 - 111.0 | 106 | 145 | 77.0 |
| KCDV230-111 | 111.0 - 116.0 | 111 | 145 | 77.0 |
| KCDV230-116 | 116.0 - 121.0 | 116 | 145 | 77.0 |
| KCDV230-121 | 121.0 - 126.0 | 121 | 145 | 83.7 |
| KCDV230-126 | 126.0 - 131.0 | 126 | 145 | 70.5 |
| KCDV230-131 | 131.0 - 136.0 | 131 | 145 | 70.5 |
| KCDV230-136 | 136.0 - 146.0 | 136 | 145 | 77.0 |
| KCDV230-146 | 146.0 - 156.0 | 146 | 145 | 77.0 |
| KCDV230-156 | 156.0 - 166.0 | 156 | 145 | 74.9 |
| KCDV230-166 | 166.0 - 178.0 | 166 | 145 | 79.3 |
| KCDV230-178 | 178.0 - 190.0 | 178 | 145 | 77.0 |
| KCDV230-190 | 190.0 - 200.0 | 190 | 145 | 77.0 |
| KCDV230-200 | 200.0 - 220.0 | 200 | 145 | 77.0 |

Large Diameter Dies available to 281 mm.

Because we continually examine ways to improve our products, we reserve the right to alter specifications or discontinue products without prior notice.