

Standard Volume Crimpers

KC1-H83 Series

NOW AVAILABLE IN 12V



Description: A highly precise unit that packs a punch. Its small footprint makes it an ideal fit for shops where space is at a premium.

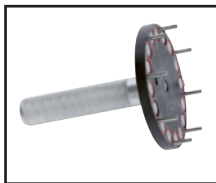
Now available in 12V for mobile service trucks.

Included Accessories:

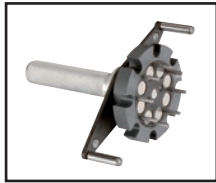


Die Rack (12 pc.)
DIERACK-H69

Optional Accessories: (pgs. 34 – 41)



Quick Change Die Tool
KCQCT-H69



Patented Quick Change Die Tool
KCPQCT-H69



Die Holder Base (12 pc.)
DIEBASE-H69



Electric Foot Pedals
PEDAL-KC1



Custom Made Dies
(pg. 41)



Marking Dies
(pg. 41)

Hose Capacity (in)		Crimping Force (ton) 150
1 – 2 Wire	1 1/2	
4 SP / 6 SP	1 1/4 / 1	
90° Fittings	1 1/4	
Industrial	1 1/2	

Opening Diameter	
Max. Without Dies (mm / in)	111 / 4.37
Max. With Dies (mm / in)	96 / 3.78
By Die Size (mm / in)	Die Size + 42 / 1.65

Crimper Size	
L x W x H (in)	23.3 x 23.3 x 21.3
Weight (lbs)	264

Part Number	Motor Info
KC1-H83-230/1	4.0 HP (230 V) 1 PH
KC1-H83-230/3	4.0 HP (230 V) 3 PH
KC1-H83-12V	4.0HP (12V)

Control Mechanism:

- Dial micrometer with locking switch
- Electromechanical controls with power, open/close and emergency off buttons




Die Series		Die Range (mm)		
H69		6 – 54		
Die Number	Crimp Range (mm)	Closed Diameter (mm)	Length (mm)	Weight (lbs/ea)
KCDH69-6	6.0 - 8.0	6	60	4.0
KCDH69-8	8.0 - 10.0	8	60	4.0
KCDH69-10	10.0 - 12.0	10	60	4.0
KCDH69-12	12.0 - 14.0	12	60	4.0
KCDH69-14	14.0 - 16.0	14	60	4.0
KCDH69-16	16.0 - 19.0	16	60	4.0
KCDH69-19	19.0 - 22.0	19	60	4.0
KCDH69-22	22.0 - 25.0	22	60	4.0
KCDH69-25	25.0 - 29.0	25	60	4.0
KCDH69-29	29.0 - 34.0	29	70	4.0
KCDH69-34	34.0 - 38.0	34	70	4.0
KCDH69-38	38.0 - 42.0	38	85	4.0
KCDH69-42	42.0 - 46.0	42	85	4.0
KCDH69-46	46.0 - 50.0	46	85	4.0
KCDH69-50	50.0 - 54.0	50	85	4.0
KCDH69-54	54.0 - 58.0	54	75	4.0

Because we continually examine ways to improve our products, we reserve the right to alter specifications or discontinue products without prior notice.