

## KC1-H135 Series



**Description:** A powerful, no frills crimper that gets the job done. Handles all styles of hydraulic hose up to 2", as well as industrial hose up to 3".

Hose Capacity (in)		Crimping Force (ton)
1 – 2 Wire	2	<b>330</b>
4 SP / 6 SP	2	
90° Fittings	2	
Industrial	3	

Opening Diameter	
Max. Without Dies (mm / in)	<b>162 / 6.38</b>
Max. With Dies (mm / in)	<b>139 / 5.47</b>
By Die Size (mm / in)	Die Size + <b>43 / 1.69</b>

Crimper Size	
L x W x H (in)	30.7 x 24.8 x 28.1
Weight (lbs)	704

Part Number	Motor Info
<b>KC1-H135-230/1</b>	5.5 HP (230 V) 1 PH
<b>KC1-H135-230/3</b>	7.5 HP (230 V) 3 PH

Die Series	Die Range (mm)
H119	6 – 96

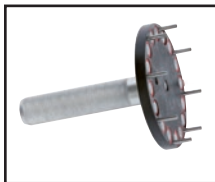
Refer to pg. 20 for available dies

### Control Mechanism:

- Dial micrometer with locking switch
- Electromechanical controls with power, open/close and emergency off buttons



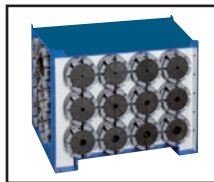
### Optional Accessories: (pgs. 34 – 41)



Quick Change Die Tool  
KCQCT-H119



Patented Quick Change Die Tool  
KCPQCT-H135



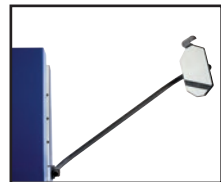
Die Holder Base (18 pc.)  
DIEBASE-H119



Die Rack (8 pc.)  
DIERACK-H119



Electric Foot Pedals  
PEDAL-KC1



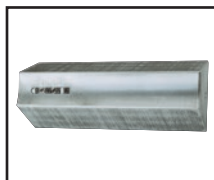
Back Mirror  
MIRROR-H135/170



Cleaning and Lubrication Kit  
CALKIT-H135



Custom Made Dies  
(pg. 41)



Marking Dies  
(pg. 41)

Because we continually examine ways to improve our products, we reserve the right to alter specifications or discontinue products without prior notice.